



empath-e

MAKING CRM MAKE SENSE

SalesLogix Enhancements **User Audit**

Date: 24/06/08
Version: 1.0
Author: Mike Spragg
Contact: 0845 1368444 / 07900 888715

This document and supporting materials are confidential and proprietary to empath-e Limited.

The information contained in this document may not be disclosed to any third party without the express permission of empath-e Limited

empath-e is registered in England and Wales No: 04745733. Vat No. GB 901 2597 45

Registered Office: Unit 1, Freemantle Business Centre, Millbrook Road East, Southampton, SO15 1JR

CONTENTS

- CONTENTS..... 2**
- 1.0 OVERVIEW 3**
 - Provision..... 3
 - Bundle Contents..... 3
 - Impact Analysis..... 3
 - Installation..... 3
 - Post Bundle Install..... 4
- 2.0 VIEWING OUTPUT..... 5**



1.0 OVERVIEW

Provision

- Audit who logs in and out of SalesLogix.
- Provide export to Excel
- Record machine name, SalesLogix version and network credentials

Bundle Contents

The following plugins are supplied or updated in this bundle.

Plugin Type	Item
Table	EM_AUDIT – used to store the login/logout data
Scripts, VBscript System:	EMAS_DBClose
	EMAS_DBOpen
Forms System:	EMAF_UserAudit
Menus System:	EMMS_UserAudit

Updated:
(None)

Impact Analysis

None of the additions will alter the system in any way and can be easily removed without issue.

Installation

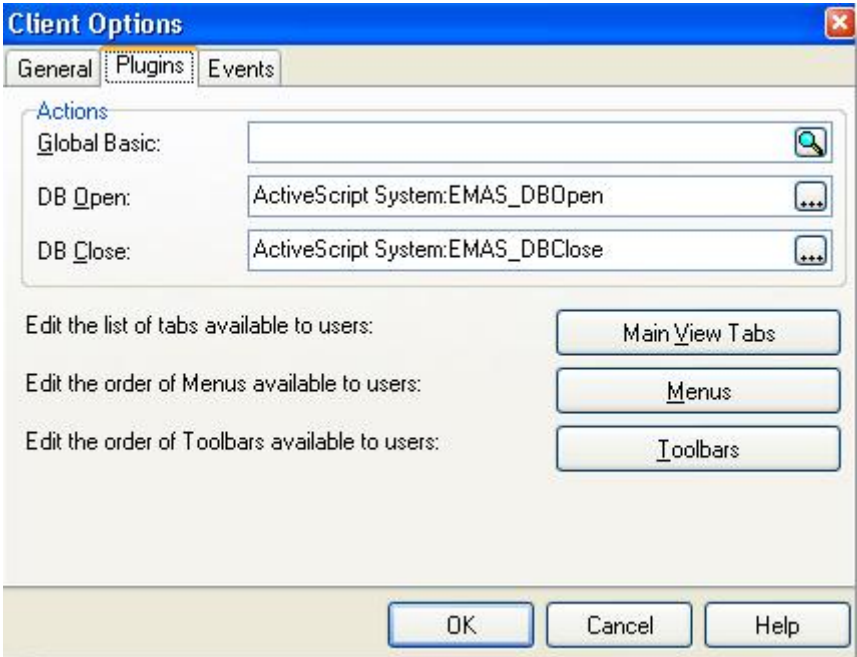
Simply install the bundle as normal – all plugins are unique and the bundle will update the scripts as necessary.



Post Bundle Install

After installing, you should modify the Open/Close events.

Within Architect go to Tools | Client Options and modify the DBOpen to run **EMAS_DBOpen** and DBClose to run **EMAS_DBClose** – otherwise, information will not be logged as expected.



2.0 VIEWING OUTPUT

Login as Admin and go to Tools | Manage | User Audit and the following is displayed:

The screenshot shows a window titled "User Audit" with the following content:

User Audit

Shown below are the last five times users have logged into SalesLogix, along with the client version number.

empath-e
MAKING CRM MAKE SENSE

Drag a column header here to group by that column

LastName	Type	Region	SLX Vsn	UserName	Most Recent Login	4	3
Administrator	Admin		7.2.2.1871	Administrator	01/07/2008 18:34:00		
All Access	Template			All Access			
Customer Service	Template			Customer Service			
Customer Service Manag	Template			Customer Service M			
Customer Support	Template			Customer Support			
Customer Support Manag	Template			Customer Support M			
Executive Management	Template			Executive Managerr			
Marketing	Template			Marketing			
Sales	Template			Sales			
Sales Manager	Template			Sales Manager			
Wetzig	Network		7.2.2.1871	Olly Wetzig	25/06/2008 21:57:26	25/06/2008 21:56:56	25/06/2008 21:56:56

Do not display retired users

Cancel Export Refresh

From here, you can export the information to Excel if required.

